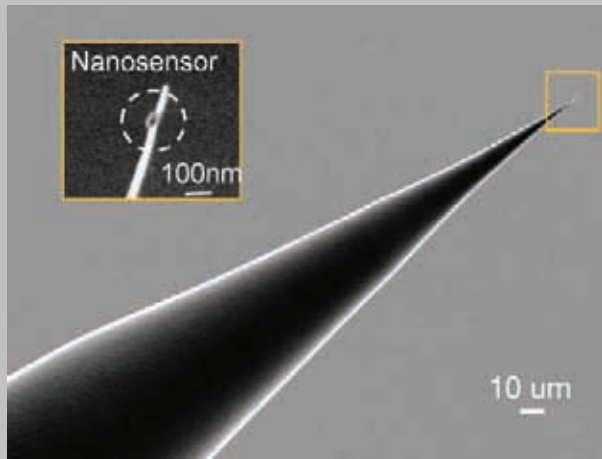


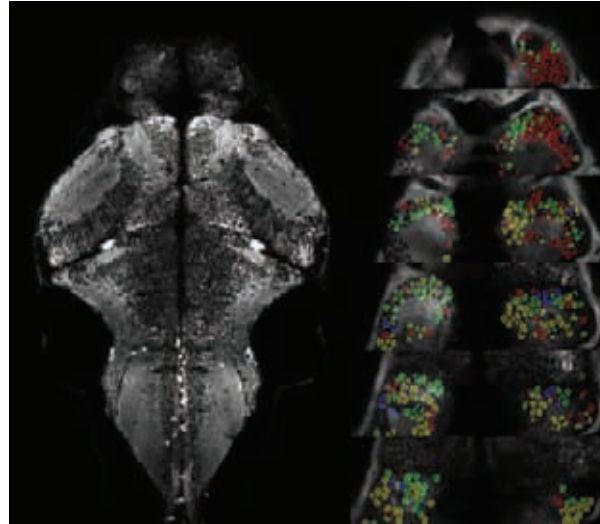
The Rowland Institute at Harvard is seeking applications for Rowland Junior Fellowships that commence in the 2015 academic year. We seek the best young experimentalists in all areas of science and engineering. The Rowland Junior Fellowship provides an opportunity to establish an independent program in the rich intellectual environment at Harvard.

Dr. Edwin Land founded the Rowland Institute in order to foster high-risk, creative research. In 2002, the Rowland Institute became part of Harvard with the mission of advancing the careers of experimental scientists and engineers at an early career stage. In the tradition of Dr. Land, we are particularly interested in young scholars with the potential to establish a ground-breaking research program in their chosen field.

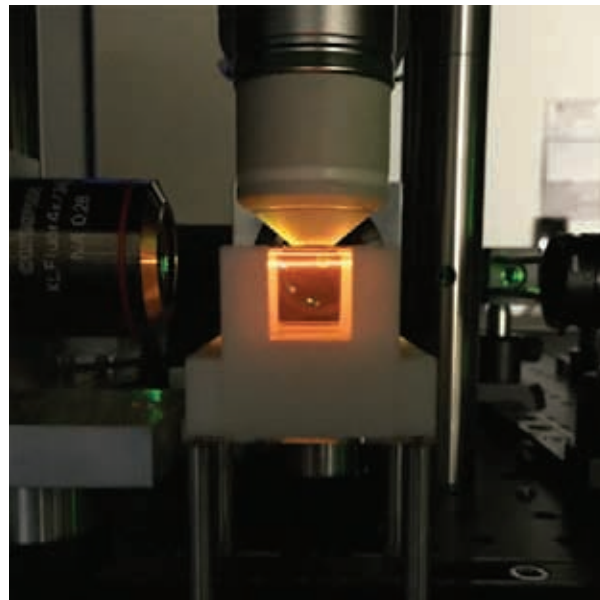


Nanosensor at the fiber tip.
RJF Qimin Quan

The Rowland Junior Fellowships are restricted to experimentalists at an early career stage (not more than three years beyond the receipt of their doctorate). Fellowship awardees will receive funding for salary and research expenses and are allocated their own laboratory space. The Rowland Institute also provides technical support from permanent staff.



Upper image - Whole brain imaging of larval zebrafish (left); value coding cells in the zebrafish habenula (right).
Lower image - Custom light sheet microscope for whole brain imaging.
RJFs Jennifer Li and Drew Robson



The term of the fellowship is for up to five years, with a flexible start date. The stipend for Rowland Junior Fellows will start at \$70,000 per year, depending on the candidate's experience. Fellows must have completed their doctoral degrees prior to starting their term.

Instructions for applying to the program are to be found at the Rowland website:

www.rowland.harvard.edu/apply .

The application deadline is Aug. 15, 2015.



SEM of the parasitoid Nasonia lifecycle from egg to adult, and a light microscopy image of Nasonia embryos.
RJF Robert Brucker

Questions about the program should be directed to rjf@rowland.harvard.edu or mail address:

Dr. Michael M. Burns
Rowland Junior Fellows Program
Rowland Institute at Harvard
100 Edwin H. Land Boulevard
Cambridge, MA 02142 USA.

Further information about the Rowland Institute can be found at -

www.rowland.harvard.edu.

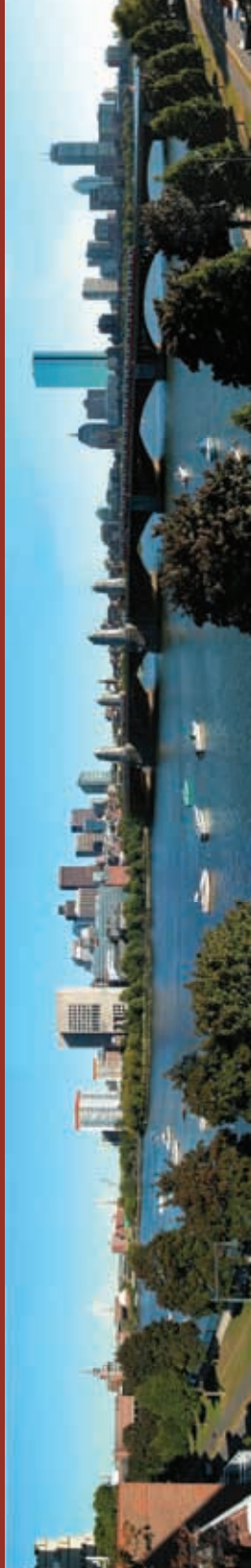
**Harvard University is an
Affirmative Action/Equal Opportunity
Employer.**

Director Cynthia M. Friend



The Rowland Junior Fellowship provides an unparalleled opportunity to explore high-risk / high-reward projects while establishing an independent research career. We seek the best young experimentalists in all areas of natural science and engineering and I look forward to learning about your innovative ideas.

www.rowland.harvard.edu



Panoramic view of Boston taken from the Institute

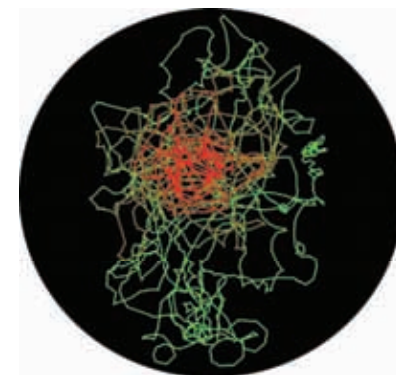
Rowland Institute at Harvard
100 Edwin H. Land Boulevard
Cambridge, MA 02142 USA

Cover image - Thermal navigation in larval zebrafish.
RJFs Jennifer Li and Drew Robson

ROWLAND INSTITUTE AT HARVARD

ROWLAND JUNIOR FELLOWS PROGRAM

www.rowland.harvard.edu



0 min 30 min

